

# AETES

NETWORK RACK ATS

*Remote Management  
ATS and 12 port PDU in-one  
Rackmount 1U Compact Design*

## ATS2330



*"...power alliance..."*

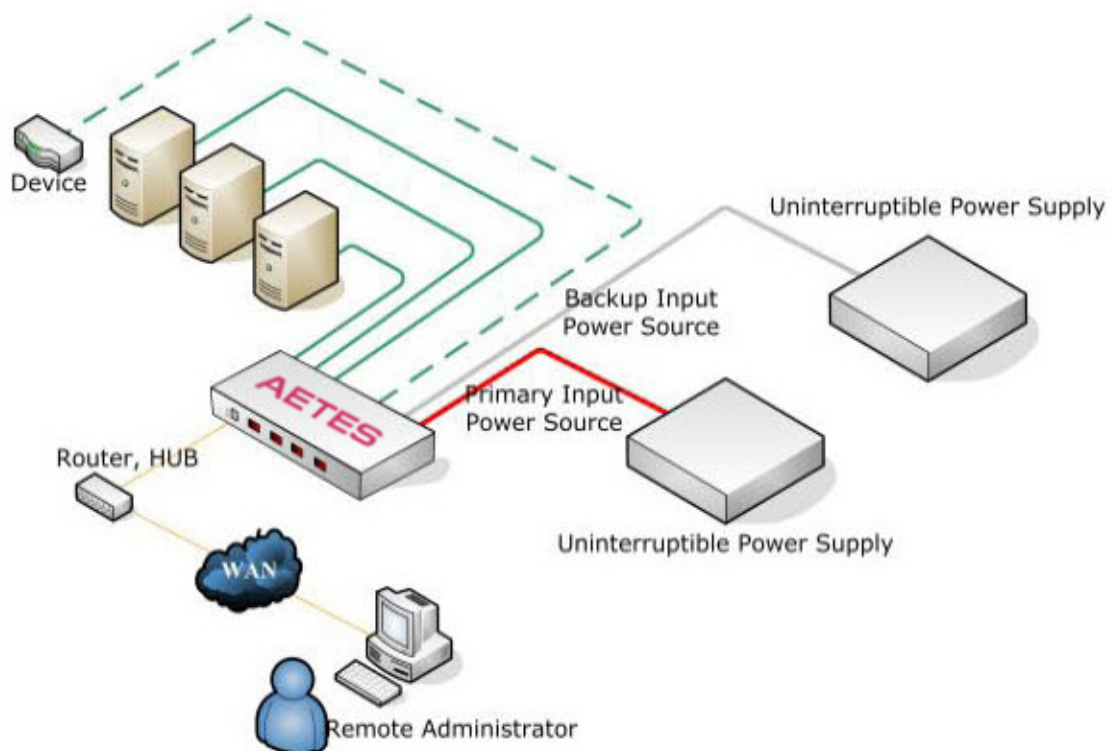
## BACK PANEL



## DESCRIPTION

The AETES Rack ATS-2330 is a Mono Phase Dual Input Rackmount ATS+PDU. This is an effective solution that builds in redundancy and increases the AC power availability of connected equipment. If the dual input power is fed through two independent AC sources, then the system availability is increased and the dual input advantages are fully used. The AETES Rack ATS-2330 provides 12 outlets that distribute redundant AC power and may be rackmount. There are four groups of three IEC-320 C13 Outlets, where each group is backed up by a 10A circuit breaker.

## APPLICATION



# SOFTWARE INTERFACE



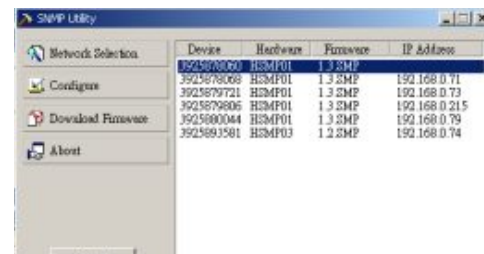
ATS MANAGEMENT



EVENT LOG



SNMP MANAGEMENT



SNMP UTILITY

# GENERAL SPECIFICATION

<b>Output</b>	<i>12 x IEC320 C13 Outlet</i>
<b>Input</b>	<i>2 x 24A Input Cables</i>
<b>Input Protection</b>	<i>2 x 30A Thermal Circuit Breaker</i>
<b>Output Protection</b>	<i>4 x 10A Circuit Breaker</i>
<b>Enclosure</b>	<i>19" 1U Rackmount Compact Steel Case</i>
<b>Color</b>	<i>Black RAL9004</i>
<b>Surge protection</b>	<i>500 Joules</i>
<b>LAN Interface</b>	<i>RJ45 10/100M Auto Detect</i>
<b>Nominal Voltage</b>	<i>230 VAC 50/60 Hz</i>
<b>Transfer Time</b>	<i>10 ms</i>
<b>Temperature</b>	<i>0°C...+40°C</i>
<b>Altitude max.</b>	<i>3000 m above sea level</i>
<b>Humidity</b>	<i>0% ~ 90%</i>
<b>Dimensions</b>	<i>7 kg</i>
<b>Weight</b>	<i>432 X 44 X 216 mm</i>
<b>Warranty</b>	<i>3 Years</i>